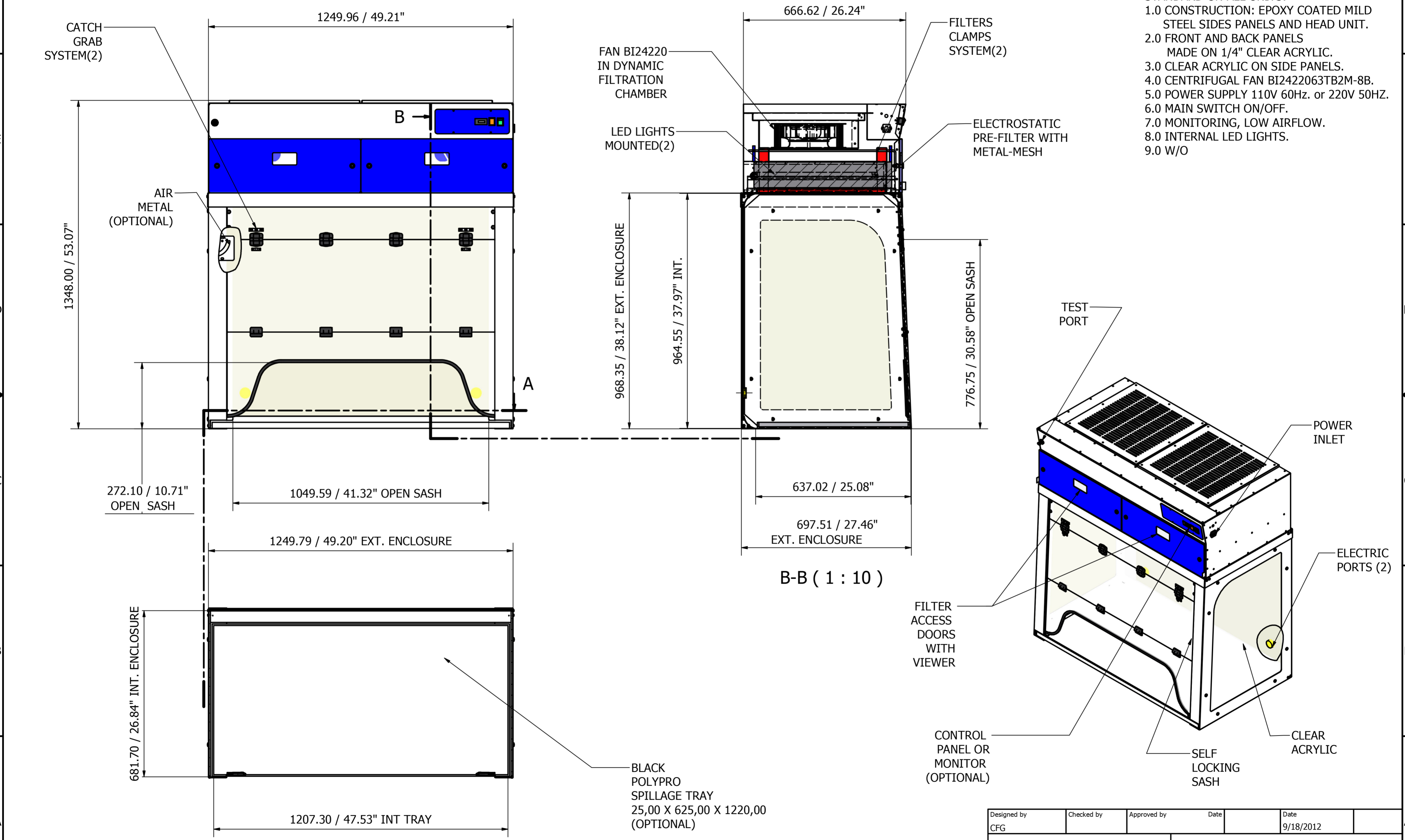


REVISION HISTORY				
ZONE	REV	DESCRIPTION	DATE	APPROVED
SIDE PANELS	1	TEMPERED GLASSES	5/18/2017	P CH
METAL HEAD	2	FAN MOD RG190	1/9/2019	P CH
METAL HEAD	3	NEW FAN MOD BI2422063TB2M-8B	6/9/2020	P CH
METAL HEAD	4	INTERNAL LED LIGHTS MOUNTED	6/9/2020	P CH
SIDE PANELS	5	CLEAR ACRYLIC ON SIDE PANELS.	8/16/2022	P CH

- NOTES:**
- 1.0 CONSTRUCTION: EPOXY COATED MILD STEEL SIDES PANELS AND HEAD UNIT.
 - 2.0 FRONT AND BACK PANELS MADE ON 1/4" CLEAR ACRYLIC.
 - 3.0 CLEAR ACRYLIC ON SIDE PANELS.
 - 4.0 CENTRIFUGAL FAN BI2422063TB2M-8B.
 - 5.0 POWER SUPPLY 110V 60Hz. or 220V 50Hz.
 - 6.0 MAIN SWITCH ON/OFF.
 - 7.0 MONITORING, LOW AIRFLOW.
 - 8.0 INTERNAL LED LIGHTS.
 - 9.0 W/O



GENERAL TOLERANCES IN MILIMETERS	
LINEAR & ANGULAR	FORM & POSITION
ISO 2768 V	ISO 2768 L

A-A (1 : 10)

B-B (1 : 10)

Designed by CFG	Checked by	Approved by	Date 9/18/2012	Date
PURAIR 20XT DUCTLESS FUME HOOD			Edition 5	Sheet 1 / 1